



# Alpha Beta Psi Chapter of Phi Theta Kappa

## March Ed. \* 2010 - 2011 \* Volume 7

National Park Community College \* 101 College Dr \* Hot Springs, AR 71913 \* (501)760-4222

We currently need volunteers to work for Destination ImagiNation on campus, Saturday, March 5<sup>th</sup>. This is a huge event, and we need all the help we can get. We also need donations for concession. If you have any contacts with area merchants, we could use your help. All donations are tax deductible, and 100% of the money taken in will be donated to Relay for Life. This event takes place on March 5<sup>th</sup> at the NPCC gymnasium. Please contact one of the officers if you can help out.

In addition, we are gearing up for another fundraiser for Phi Theta Kappa. Any items that you have or can obtain from area merchants or individuals that can be used in gift baskets would be greatly appreciated. We currently have twelve gift baskets to give away. If you are willing to help with donation tickets, please contact Sheila Sheffield. You will be responsible for keeping up with all money and tickets up until the time they are turned in. A drawing for the gift baskets will be held on Thursday, April 22<sup>nd</sup>. Winners will be notified at that time.

T-shirts are in. Contact Sonya Cole at [scole@npcc.edu](mailto:scole@npcc.edu) if you would like to purchase one.

A number of \$8,000 per year renewable scholarships are available. Visit [www.collegefish.org](http://www.collegefish.org) and click on "Browse Scholarships List."

Check out the Hites Scholarship at [www.ptk.org](http://www.ptk.org) and/or [www.collegefish.org](http://www.collegefish.org).

We need all the help we can get. If you have special talents and a desire to become involved, please come to the next meeting.

### MARCH DATES TO REMEMBER

- Mar 5 at 8am-4pm – Destination ImagiNation at NPCC Gymnasium
- Mar 7 at 10am-2:30pm – Phi Theta Kappa Blood Drive
- Mar 8 at 10am-2:30pm – Phi Theta Kappa Blood Drive
- Mar 10 at 7:45am – Chapter Meeting Room LS213
- Mar 19 at 9am-11am – Officers only meeting at Garland County Library
- Mar 28 at 5:00pm – Chapter Meeting Room LS202
- Mar 26 – We have declined from Bark for Life

### MEMBER SPOTLIGHT

If you know of a member who deserves recognition for their acts of service or achievements, please submit the information to Sheila Sheffield. Any articles or ideas are welcome as well.

### 2010 – 2011 OFFICERS AND ADVISORS

- President.....Sonya Cole – [scole1@npcc.edu](mailto:scole1@npcc.edu)
- Vice-President.....
- Recording Secretary.....
- Treasurer.....
- PR Secretary/Historian...Sheila Sheffield – [ssheffield@npcc.edu](mailto:ssheffield@npcc.edu)

Chapter Advisor: Ms. Barbara Briscoe; Mr. Caleb Grisham; Mr. John Rima

Chapter Administrator: Mrs. Maggie Picking

College President: Dr. Sally Carder

<http://www.facebook.com/#!/group.php?gid=115122978515646>

### ABOUT OUR MISSION:

Phi Theta Kappa's mission is two-fold: 1) recognize and encourage the academic achievement of two-year college students and (2) provide opportunities for individual growth and development through participation in honors, leadership, service and fellowship.

**If anyone is interested in donating to relay for life, you can go to this link and donate online:**

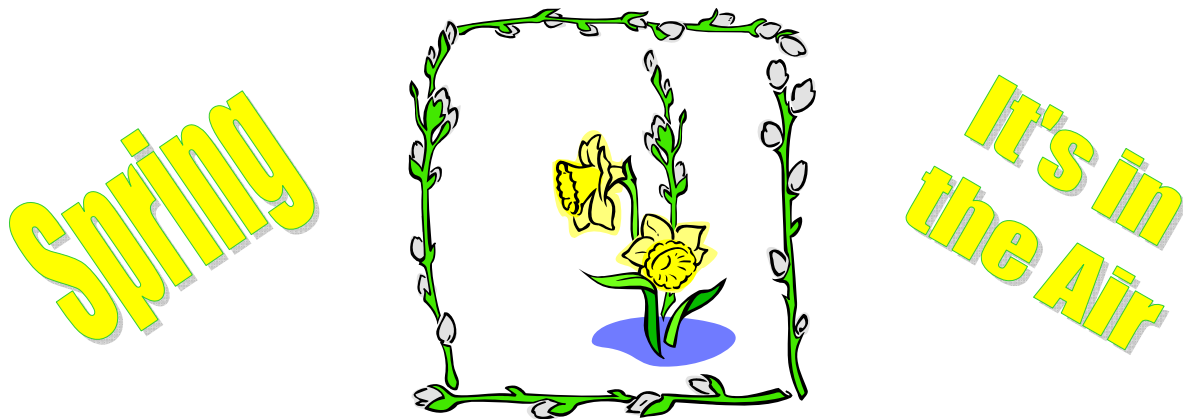
[http://main.acsevents.org/site/TR/RelayForLife/RFLFY11MS?team\\_id=809822&pg=team&fr\\_id=28741](http://main.acsevents.org/site/TR/RelayForLife/RFLFY11MS?team_id=809822&pg=team&fr_id=28741)

## REGIONAL CONFERENCE UPDATE:

The Alpha Beta Psi chapter of Phi Theta Kappa at National Park Community College brought home five awards from the regional conference held in Conway, AR Saturday, February 25<sup>th</sup> and 26<sup>th</sup>. Below is a list of our accomplishments:

- Honors in Action project by topic: 1<sup>st</sup> place
- Overall Honors in Action project: Placed in the top 5
- Most distinguished chapter member: Sharon Parrett placed in the top 5
- Most distinguished officer: Sonya Cole placed in the top 5
- Top Newsletters: Sheila Sheffield placed in the top 3

These awards were based in comparison to regional participants. There were a total of 42 schools participating. Congratulations on all your hard work and dedication Alpha Beta Psi.



## UPCOMING EVENT

The Arkansas Council for the Blind is holding its state convention in Hot Springs, AR on April 29<sup>th</sup> and 30<sup>th</sup>. This was one of the choices we considered taking on as our Honors in Action Project but decided to offer assistance for the spring convention instead.

ACB is looking for volunteers to assist blind tourists on a dinner cruise on the Belle of Hot Springs on the evening of the 30<sup>th</sup>. The cost of the cruise would range from \$26 - \$30 per volunteer. Assistance could also be used throughout the day to help show the guests around.

If you are interested in helping with this event, please contact Sheila Sheffield at [ssheffield@npcc.edu](mailto:ssheffield@npcc.edu) or 501-622-9384. In order to provide the president of ACB with a count of volunteers, the deadline to commit to volunteer is Saturday, March 26<sup>th</sup>. Thank you in advance for your consideration.